

INSTRUMENT APPROACH CHART - ICAO

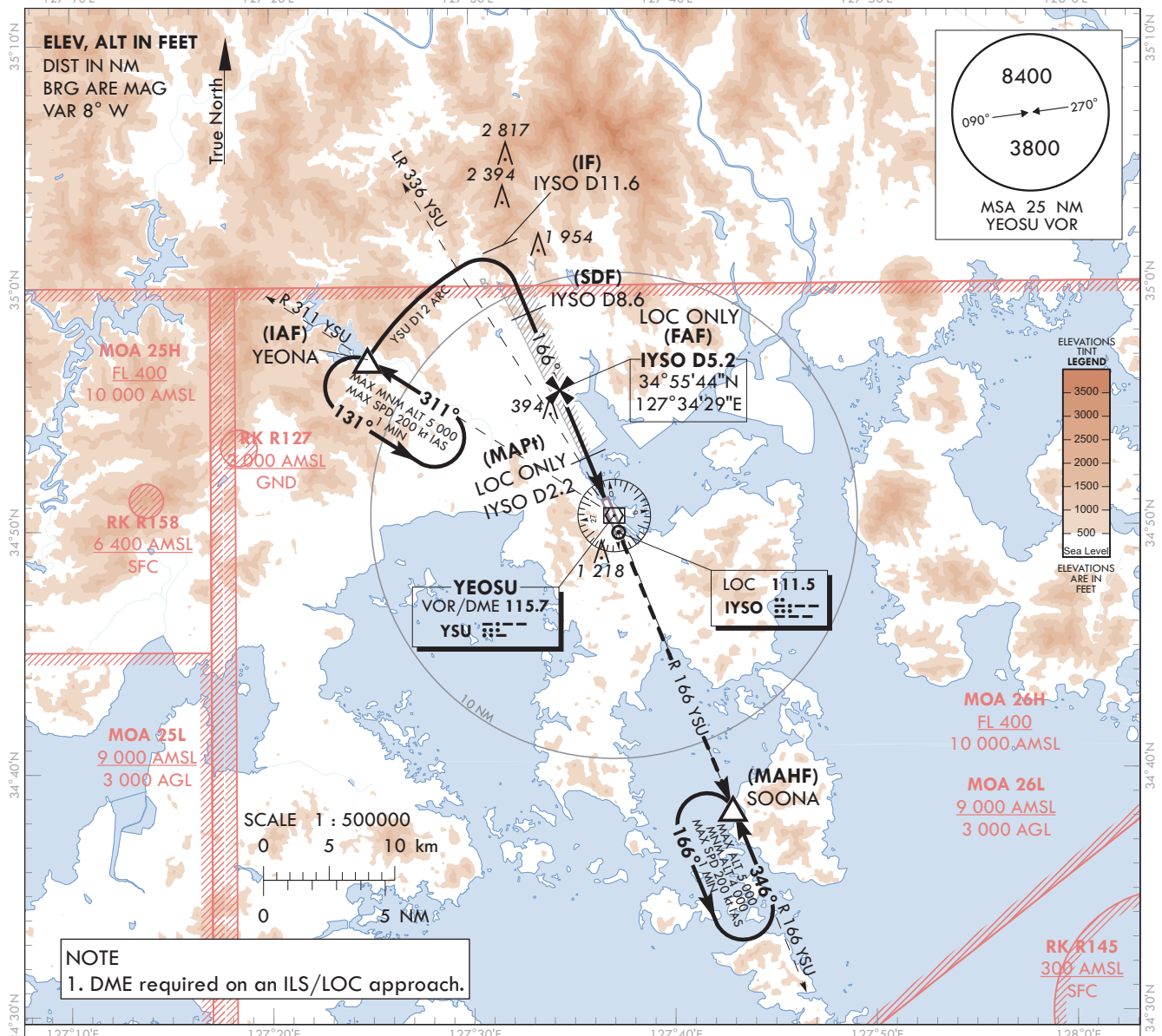
Note : Approach Under ICAO Flight Procedures.

AERODROME ELEV 53 ft
HEIGHTS RELATED TO
THR RWY 17 - ELEV **28 ft**

SACHEON	APP	135.4
YEOSU	TWR	122.5
		240.9

YEOSU/Yeosu (RKJY)

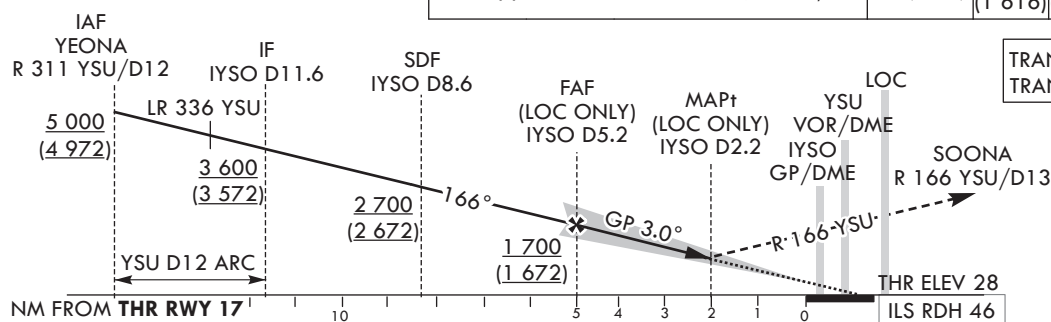
ILS Y or LOC Y RWY 17



127°10'E MISSED APPROACH

Climb to R 166 YSU to SOONA
and Hold at 4 000 ft

RECOMMENDED PROFILE(LOC ONLY)	DME IYSO	5	4	3	2.2
Final Approach Gradient 5.31%, 323 ft/NM	ALT(HGT)	1 644 (1 616)	1 321 (1 293)	998 (970)	740 (712)



TRANSITION	ALT	14 000
TRANSITION	LVL	FL 140

CATEGORY			DA(DH)/ MDA(MDH)	A	B	C	D							
STA	CAT-1 (CG 2.5%)	FULL	351	1 000 m					Knots	60	90	120	150	180
		ALS INOP	(323)	1 700 m										
	CAT-1 (CG 5.0%)	FULL	228	RVR 550 m, VIS 800 m				Rate of descent	V/V fpm	318	478	637	796	955
		ALS INOP	(200)	1 200 m										
	LOC (CG 2.5%)	FULL	910	3 300 m				* Timing Not authorized for defining MAPt. * Circling Not authorized.						
		ALS INOP	(882)	4 000 m										
	LOC (CG 5.0%)	FULL	740	3 200 m										
		ALS INOP	(712)	3 900 m										

Change : Improved clarity such as terrain.

YEOSU/Yeosu(RKJY)
ILS Y or LOC Y RWY 17

AERONAUTICAL DATA TABULATION

ILS Y / LOC Y Approach to RWY 17 from YEONA			
Fix/point		Coordinates	
YEONA(IAF)	R 311 YSU /12.00 NM YSU	34°57'03.8"N	127°24'52.1"E
D11.6 IYSO(IF)	BRG 165.87°/11.60 NM IYSO	35°01'41.4"N	127°31'33.6"E
D8.6 IYSO(SDF)	BRG 165.87°/8.60 NM IYSO	34°58'54.5"N	127°32'55.7"E
D5.2 IYSO(FAF LOC ONLY)	BRG 165.87°/5.17 NM IYSO	34°55'44.1"N	127°34'29.3"E
D2.2 IYSO(MAPt LOC ONLY)	BRG 165.87°/2.20 NM IYSO	34°52'58.5"N	127°35'50.6"E
THR RWY 17	Final approach descent angle 3.04° (LOC ONLY)	34°51'03.73"N	127°36'46.77"E
IYSO DME		34°50'57.3"N	127°36'54.6"E
YSU VOR/DME		34°50'34.3"N	127°37'08.7"E
IYSO LOC		34°49'52.0"N	127°37'21.9"E
SOONA	BRG 166.34°/13.00 NM YSU	34°38'27.5"N	127°42'56.0"E

**INSTRUMENT
APPROACH
CHART - ICAO**

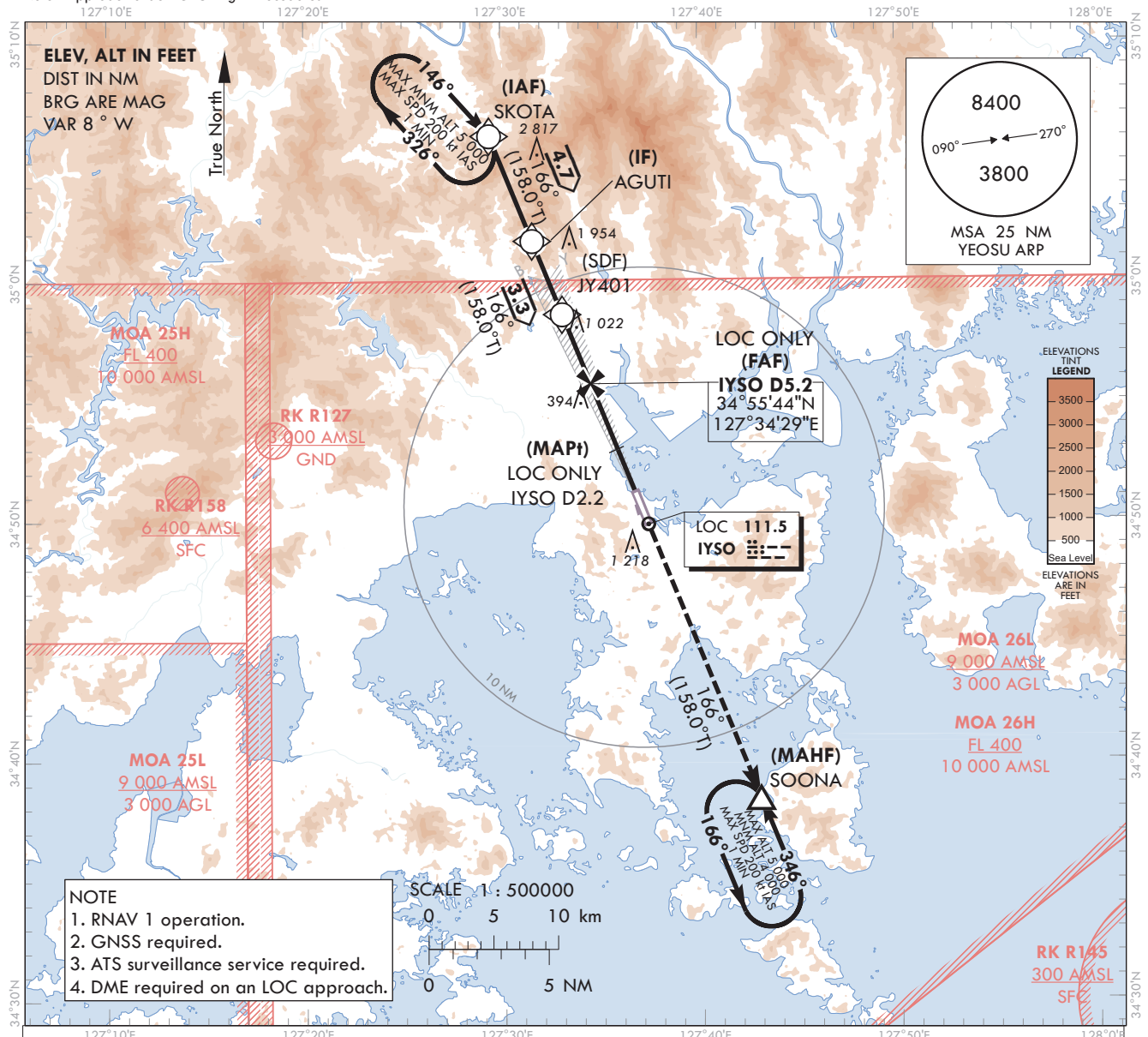
Note : Approach under ICAO Flight Procedures.

AERODROME ELEV 53 ft
HEIGHTS RELATED TO
THR RWY 17 - ELEV 28 ft

SACHEON APP 135.4
YEOSU TWR 122.5
240.9

YEOSU/Yeosu (RKJY)

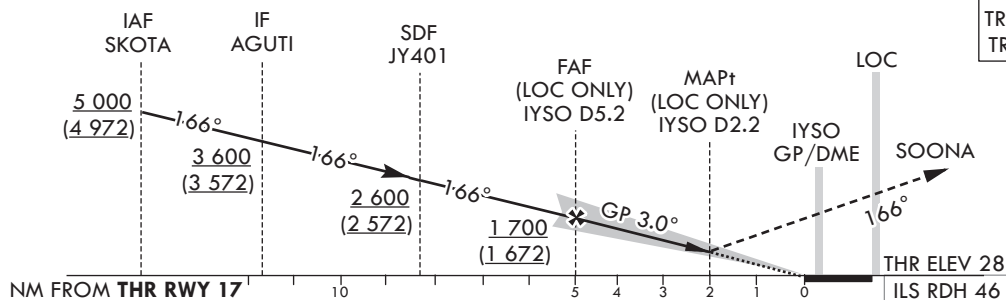
ILS Z or LOC Z RWY 17



MISSED APPROACH

Climb to 4 000 ft on track of 166° to SOONA.
Hold as published.

RECOMMENDED PROFILE(LOC ONLY)	DME IYISO	5	4	3	2.2
Final Approach Gradient 5.31%, 323 ft/NM	ALT(HGT)	1 644 (1 616)	1 321 (1 293)	998 (970)	740 (712)



CATEGORY			DA(DH)/ MDA(MDH)	A	B	C	D							
STA	CAT-1	FULL	351	1 000 m				Rate of descent	Knots	60	90	120	150	180
	(CG 2.5%)	ALS INOP	(323)	1 700 m										
	CAT-1	FULL	228	RVR 550 m, VIS 800 m										
	(CG 5.0%)	ALS INOP	(200)	1 200 m										
	LOC	FULL	910	3 300 m										
	(CG 2.5%)	ALS INOP	(882)	4 000 m										
	LOC	FULL	740	3 200 m										
	(CG 5.0%)	ALS INOP	(712)	3 900 m										
*Timing Not authorized for defining MAPt.														
*Circling Not authorized.														

Change : Improved clarity such as terrain.

YEosu/Yeosu(RKJY)
ILS Z or LOC Z RWY 17

AERONAUTICAL DATA TABULATION

ILS Z / LOC Z Approach to RWY 17 from SKOTA			
Fix/point		Coordinates	
SKOTA(IAF)		35°06'04.9"N	127°29'24.2"E
AGUTI(IF)		35°01'41.4"N	127°31'33.6"E
JY401(SDF)		34°58'37.8"N	127°33'04.0"E
D5.2 IYSO(FAF LOC ONLY)	BRG 165.87°/5.17 NM IYSO	34°55'44.1"N	127°34'29.3"E
D2.2 IYSO(MAPt LOC ONLY)	BRG 165.87°/2.20 NM IYSO	34°52'58.5"N	127°35'50.6"E
THR RWY 17	Final approach descent angle 3.04° (LOC ONLY)	34°51'03.73"N	127°36'46.77"E
IYSO DME		34°50'57.3"N	127°36'54.6"E
IYSO LOC		34°49'52.0"N	127°37'21.9"E
SOONA		34°38'27.5"N	127°42'56.0"E

**INSTRUMENT
APPROACH
CHART - ICAO**

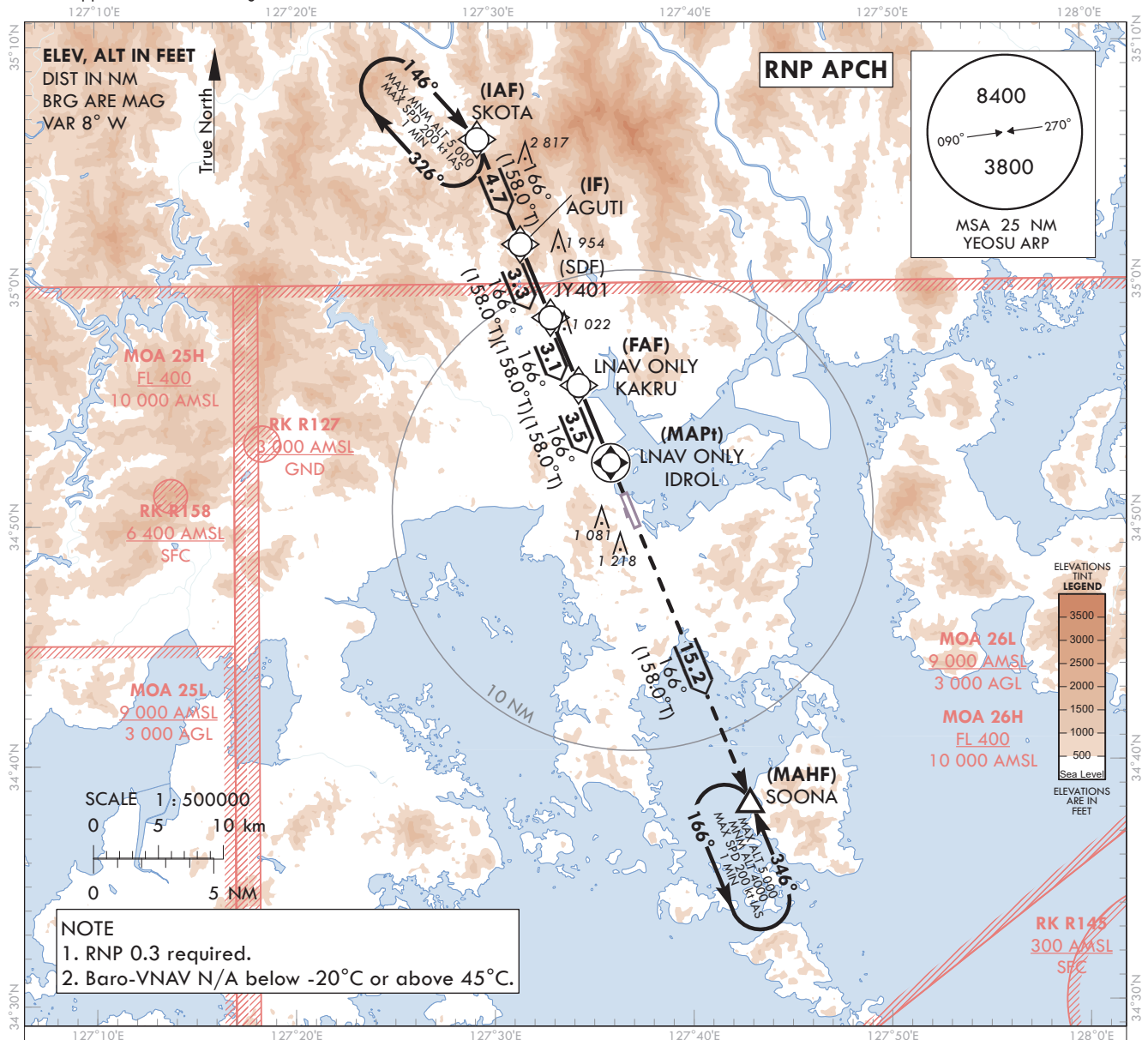
AERODROME ELEV 53 ft
HEIGHTS RELATED TO
THR RWY 17 - ELEV 28 ft

SACHEON APP 135.4
YEOSU TWR 122.5
240.9

YEOSU/Yeosu (RKJY)

RNP RWY 17

Note : Approach Under ICAO Flight Procedures.



MISSED APPROACH

Climb to 4 000 ft on track of 166° to SOONA.
Hold as published.

TRANSITION ALT 14 000
TRANSITION LVL FL 140

Obstacle clearance chart for the missed approach to SOONA. The chart shows a profile view with distance in NM from THR RWY 17 on the x-axis (0 to 10) and various altitudes. Key points include IAF SKOTA at 5,000 ft (4,972 ft MSL), IF AGUTI at 3,600 ft (3,572 ft MSL), SDF JY401 at 2,600 ft (2,572 ft MSL), FAF (LNAV ONLY) KAKRU at 1,700 ft (1,672 ft MSL), and MAPt (LNAV ONLY) IDROL at 1,040 ft. The chart also shows the SOONA threshold at 28 ft elevation and a dashed line indicating the missed approach climb to 4,000 ft. Shaded areas represent obstacle clearance surfaces.

CATEGORY			MDA(H)/DA(H)	A	B	C	D	Rate of descent	Knots										
									60	90	120	150	180						
STA	LNAV/VNAV	FULL	910	3 300 m				V/V fpm	319	478	637	796	956						
		ALS INOP	(882)	4 000 m															
	LNAV	FULL	1 040	4 100 m															
		ALS INOP	(1 012)	4 900 m															
									* Timing Not authorized for defining MAPt.										
									* Circling Not authorized.										

Change : Improved clarity such as terrain.

AERONAUTICAL DATA TABULATION

Instrument Approach Procedure Coding Tables

RNP RWY 17

Serial Number	Path Descriptor	Waypoint Identifier	Fly-over	Course/Track °M(°T)	Distance (NM)	Turn direction	Altitude (ft)	Speed (kt)	Coordinates	VPA/RDH	Navigation specification	Remarks
001	IF	SKOTA	-	-	-	-	+5 000	-	35°06'04.9"N 127°29'24.2"E	-	RNP APCH	IAF
002	TF	AGUTI	-	166(158.0)	4.7	-	+3 600	-	35°01'41.4"N 127°31'33.6"E	-	RNP APCH	IF
003	TF	JY401	-	166(158.0)	3.3	-	+2 600	-	34°58'37.8"N 127°33'04.0"E	-	RNP APCH	SDF
004	TF	KAKRU	-	166(158.0)	3.1	-	+1 700	-	34°55'47.5"N 127°34'27.6"E	-	RNP APCH	FAF
005	TF	IDROL	Y	166(158.0)	3.5	-	+1 040	-	34°52'32.9"N 127°36'03.1"E	-3.00/50	RNP APCH	MAPt
006	TF	SOONA	Y	166(158.0)	15.2	-	-	-	34°38'27.5"N 127°42'56.0"E	-	RNP APCH	-
007	HM	SOONA	Y	346(338.5)	-	L	-5 000 +4 000	-200	34°38'27.5"N 127°42'56.0"E	-	RNP APCH	1 MIN (Outbound timing)

HOLDING PROCEDURE

Holding Identification	Path Descriptor	Waypoint Identifier	Fly-over	Course/Track °M(°T)	Time (min)	Turn direction	Altitude (ft)	Speed (kt)	Coordinates	VPA/RDH	Navigation specification	Remarks
RNP RWY 17	HM	SKOTA	Y	146(138.0)	1	R	@5 000	-200	35°06'04.9"N 127°29'24.2"E	-	RNAV 1	-

**INSTRUMENT
APPROACH
CHART - ICAO**

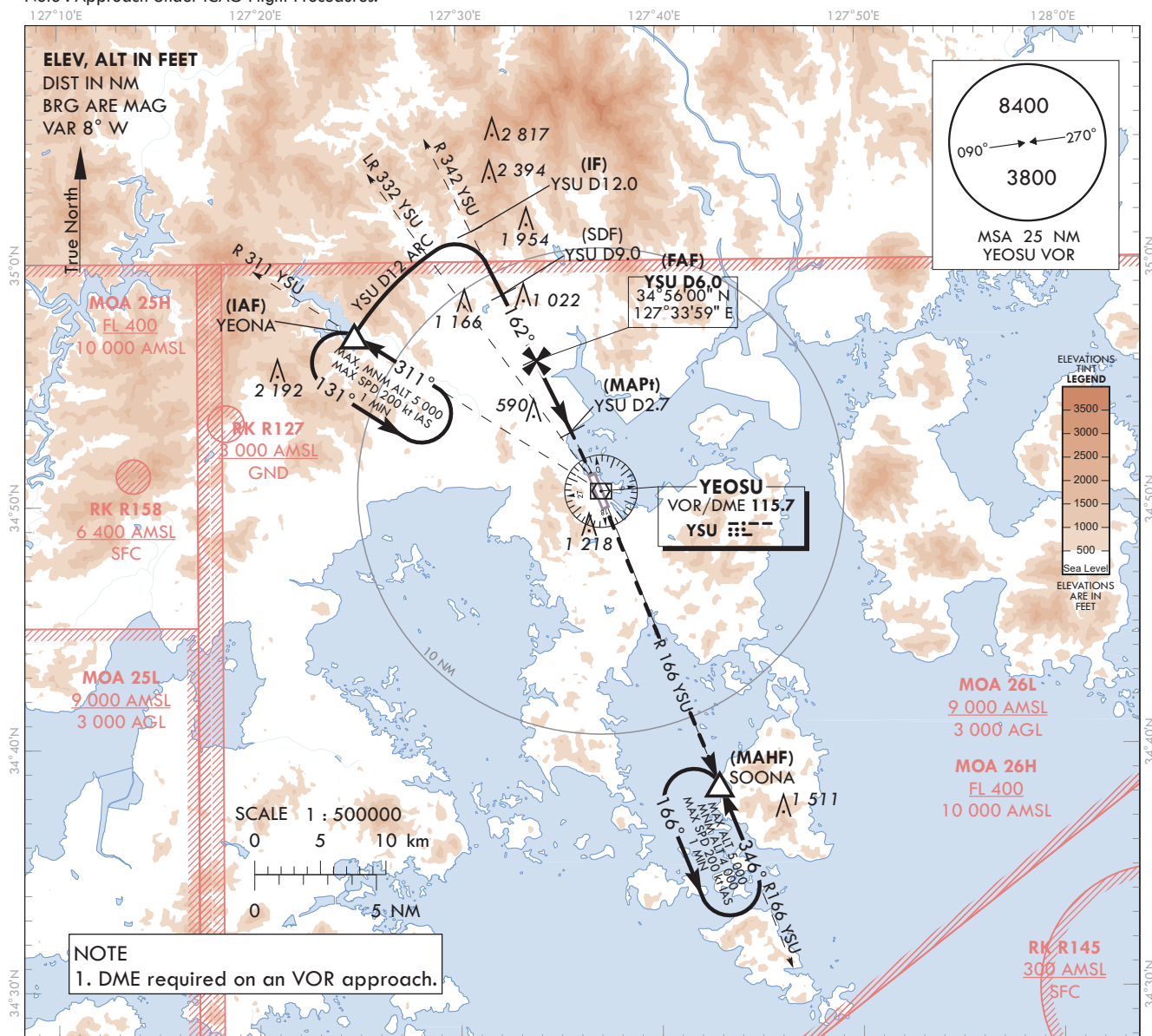
AERODROME ELEV 53 ft
HEIGHTS RELATED TO
THR RWY 17 - ELEV 28 ft

SACHEON	APP	135.4
YEOSU	TWR	122.5
		240.9

YEOSU/Yeosu (RKJY)

VOR RWY 17

Note : Approach Under ICAO Flight Procedures.

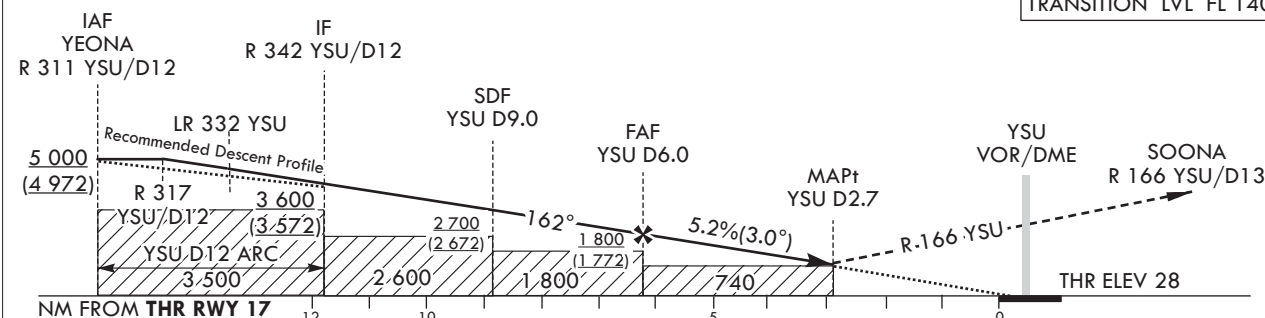


MISSED APPROACH

Climb on R 166 YSU to SOONA and Hold at 4 000 ft.

RECOMMENDED PROFILE	DME YSU	5	4	3	2.7
Final Approach Gradient 5.22%, 317 ft/NM	ALT(HGT)	1 483 (1 455)	1 166 (1 138)	849 (821)	760 (732)

TRANSITION ALT 14 000
TRANSITION LVL FL 140



CATEGORY		MDA(MDH)	A	B	C	D		Knots	60	90	120	150	180
STA (CG 2.5%)	FULL	900		3 300 m			Rate of descent	V/V fpm	317	476	634	793	951
	ALS INOP	(872)		4 000 m									
STA (CG 5.0%)	FULL	740		3 300 m			*Timing Not authorized for defining MAPt. *Circling Not authorized.						
	ALS INOP	(712)		4 000 m									

Change : Amended phrase(R 310 YSU → R 311 YSU).

AERONAUTICAL DATA TABULATION

VOR Approach to RWY 17 from YEONA			
Fix/point		Coordinates	
YEONA(IAF)	R 311 YSU /12.00 NM YSU	34°57'03.8"N	127°24'52.1"E
D12.0 YSU(IF)	BRG 162.28°/12.00 NM YSU	35°01'24.8"N	127°30'50.3"E
D9.0 YSU(SDF)	BRG 162.28°/9.00 NM YSU	34°58'42.2"N	127°32'24.9"E
D6.0 YSU(FAF)	BRG 162.28°/6.00 NM YSU	34°55'59.5"N	127°33'59.4"E
D2.7 YSU(MAPt)	BRG 162.28°/2.70 NM YSU	34°53'00.6"N	127°35'43.3"E
THR RWY 17	Final approach descent angle 2.99°	34°51'03.73"N	127°36'46.77"E
YSU VOR/DME		34°50'34.3"N	127°37'08.7"E
SOONA	BRG 166.34°/13.00 NM YSU	34°38'27.5"N	127°42'56.0"E

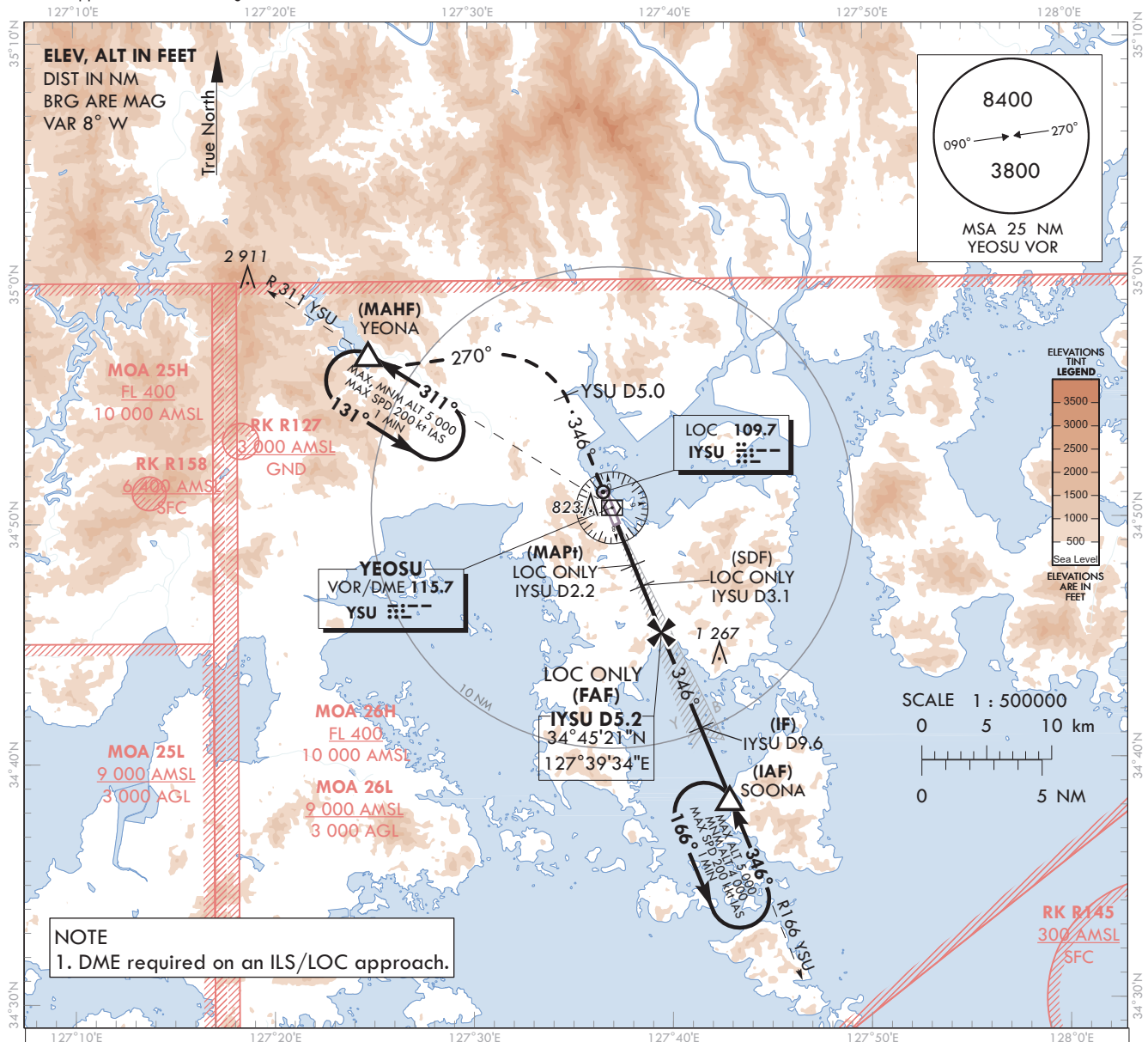
AERODROME ELEV 53 ft
HEIGHTS RELATED TO
THR RWY 35 - ELEV **31 ft**

SACHEON	APP	135.4
YEOSU	TWR	122.5
		240.9

YEOSU/Yeosu (RKJY)

ILS Y or LOC Y RWY 35

Note : Approach Under ICAO Flight Procedures.



RECOMMENDED PROFILE				DME IYSU	5	4	3	2.5
Final Approach Gradient 5.31%, 323 ft/NM				ALT(HGT)	1 646 (1 615)	1 323 (1 292)	1 001 (970)	850 (819)

* When conducting ILS 2.5% and LOC 2.5% missed APCH, missed APCH turn limited to 210 kt IAS maximum.

TRANSITION ALT 14 000

TRANSITION LVL FL 140

MISSSED APPROACH

Climb straight ahead to YSU 5 DME, Then turn LEFT HDG 270° to intercept and Climb on R 311 YSU to YEONA and Hold at 5 000 ft

CATEGORY			DA(DH)/MDA(MDH)	A	B	C	D
STA	CAT-1 (CG 2.5%)	FULL	465 (434)	1 900 m			
		ALS INOP	234 (203)	2 300 m			
	CAT-1 (CG 5.0%)	FULL	234 (203)	RVR 750 m, VIS 800 m			
		ALS INOP	234 (203)	1 200 m			
	LOC (CG 2.5%)	FULL	850 (819)	3 400 m			
		ALS INOP	850 (819)	3 800 m			

		Knots	60	90	120	150	180
Rate of descent	V/V fpm	318	478	637	796	955	

* Timing Not authorized for defining MAPt.
* Circling Not authorized.

Chage : Improved clarity such as terrain.

YEosu/Yeosu(RKJY)
ILS Y or LOC Y RWY 35

AERONAUTICAL DATA TABULATION

ILS Y / LOC Y Approach to RWY 35 from SOONA			
Fix/point		Coordinates	
SOONA(IAF)	R 166 YSU /13.00 NM YSU	34°38'27.5"N	127°42'56.0"E
D9.6 IYSU(IF)	BRG 345.94°/9.60 NM IYSU	34°41'14.7"N	127°41'34.5"E
D5.2 IYSU(FAF LOC ONLY)	BRG 345.94°/5.17 NM IYSU	34°45'21.2"N	127°39'34.2"E
D3.1 IYSU(SDF LOC ONLY)	BRG 345.94°/3.10 NM IYSU	34°47'16.1"N	127°38'38.1"E
D2.2 IYSU(MAPt LOC ONLY)	BRG 345.94°/2.20 NM IYSU	34°48'06.4"N	127°38'13.5"E
THR RWY 35	Final approach descent angle 3.04° (LOC ONLY)	34°50'00.53"N	127°37'17.70"E
IYSU DME		34°50'10.5"N	127°37'18.1"E
YSU VOR/DME		34°50'34.3"N	127°37'08.7"E
IYSU LOC		34°51'13.0"N	127°36'42.2"E
D5.0 YSU	BRG 345.94°/5.00 NM YSU	34°55'10.9"N	127°34'45.7"E
YEONA	R 311 YSU /12.00 NM YSU	34°57'03.8"N	127°24'52.1"E

**INSTRUMENT
APPROACH
CHART - ICAO**

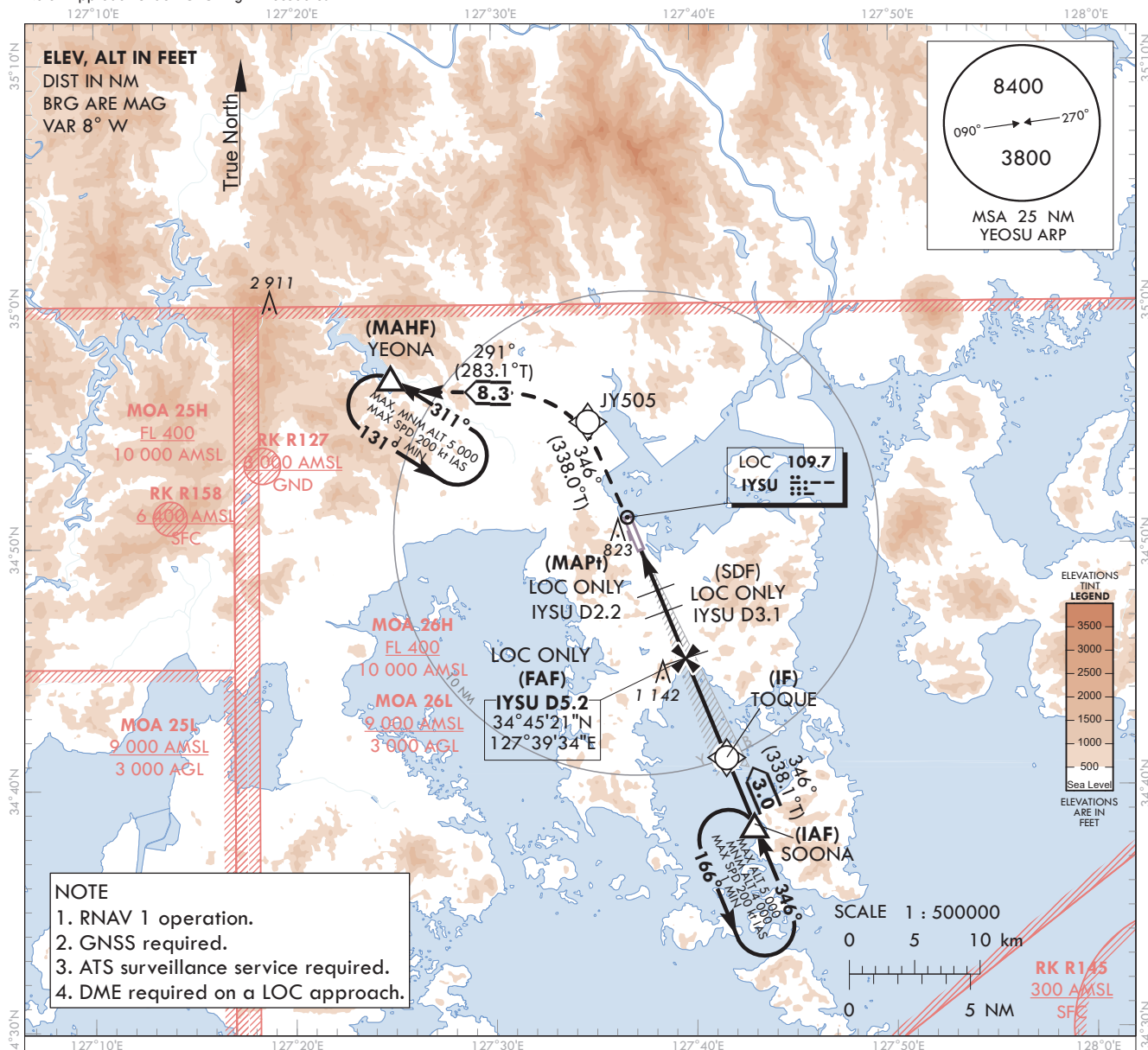
AERODROME ELEV 53 ft
HEIGHTS RELATED TO
THR RWY 35 - ELEV 31 ft

SACHEON	APP	135.4
YEOSU	TWR	122.5
		240.9

YEOSU/Yeosu (RKJY)

ILS Z or LOC Z RWY 35

Note : Approach Under ICAO Flight Procedures.

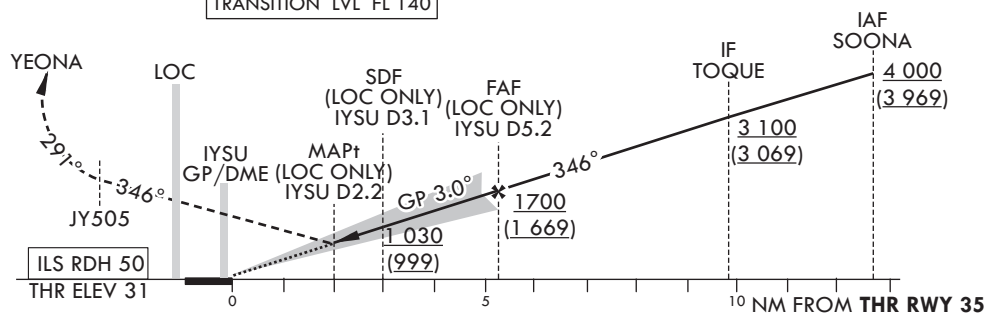


RECOMMENDED PROFILE	DME IYSU	5	4	3	2.5
Final Approach Gradient 5.31%, 323 ft/NM	ALT(HGT)	1 646 (1 615)	1 323 (1 292)	1 001 (970)	850 (819)

TRANSITION ALT 14 000
TRANSITION LVL FL 140

MISSED APPROACH

Climb at 5 000 ft on track of 346° to JY505, LEFT turn on track of 291° to YEONA, Hold as published.



CATEGORY			DA(DH)/ MDA(MDH)	A	B	C	D								
STA	CAT-1 (CG 2.5%)	FULL	465	1 900 m				Rate of descent	Knots	60	90	120	150	180	
		ALS INOP	(434)	2 300 m					V/V fpm	318	478	637	796	955	
	CAT-1 (CG 5.0%)	FULL	234	RVR 750 m, VIS 800 m											
		ALS INOP	(203)	1 200 m											
	LOC (CG 2.5%)	FULL	850	3 400 m					*Timing Not authorized for defining MAPt.						
		ALS INOP	(819)	3 800 m					*Circling Not authorized.						

*Timing Not authorized for defining MAPt.
*Circling Not authorized.

Change : Improved clarity such as terrain.

YEosu/Yeosu(RKJY)
ILS Z or LOC Z RWY 35

AERONAUTICAL DATA TABULATION

ILS Z / LOC Z Approach to RWY 35 from SOONA			
Fix/point		Coordinates	
SOONA(IAF)		34°38'27.5"N	127°42'56.0"E
TOQUE(IF)		34°41'14.7"N	127°41'34.5"E
D5.2 IYSU(FAF LOC ONLY)	BRG 345.94°/5.17 NM IYSU	34°45'21.2"N	127°39'34.2"E
D3.1 IYSU(SDF LOC ONLY)	BRG 345.94°/3.10 NM IYSU	34°47'16.1"N	127°38'38.1"E
D2.2 IYSU(MAPt LOC ONLY)	BRG 345.94°/2.20 NM IYSU	34°48'06.4"N	127°38'13.5"E
THR RWY 35	Final approach descent angle 3.04° (LOC ONLY)	34°50'00.53"N	127°37'17.70"E
IYSU DME		34°50'10.5"N	127°37'18.1"E
IYSU LOC		34°51'13.0"N	127°36'42.2"E
JY505		34°55'10.9"N	127°34'45.7"E
YEONA		34°57'03.8"N	127°24'52.1"E

**INSTRUMENT
APPROACH
CHART - ICAO**

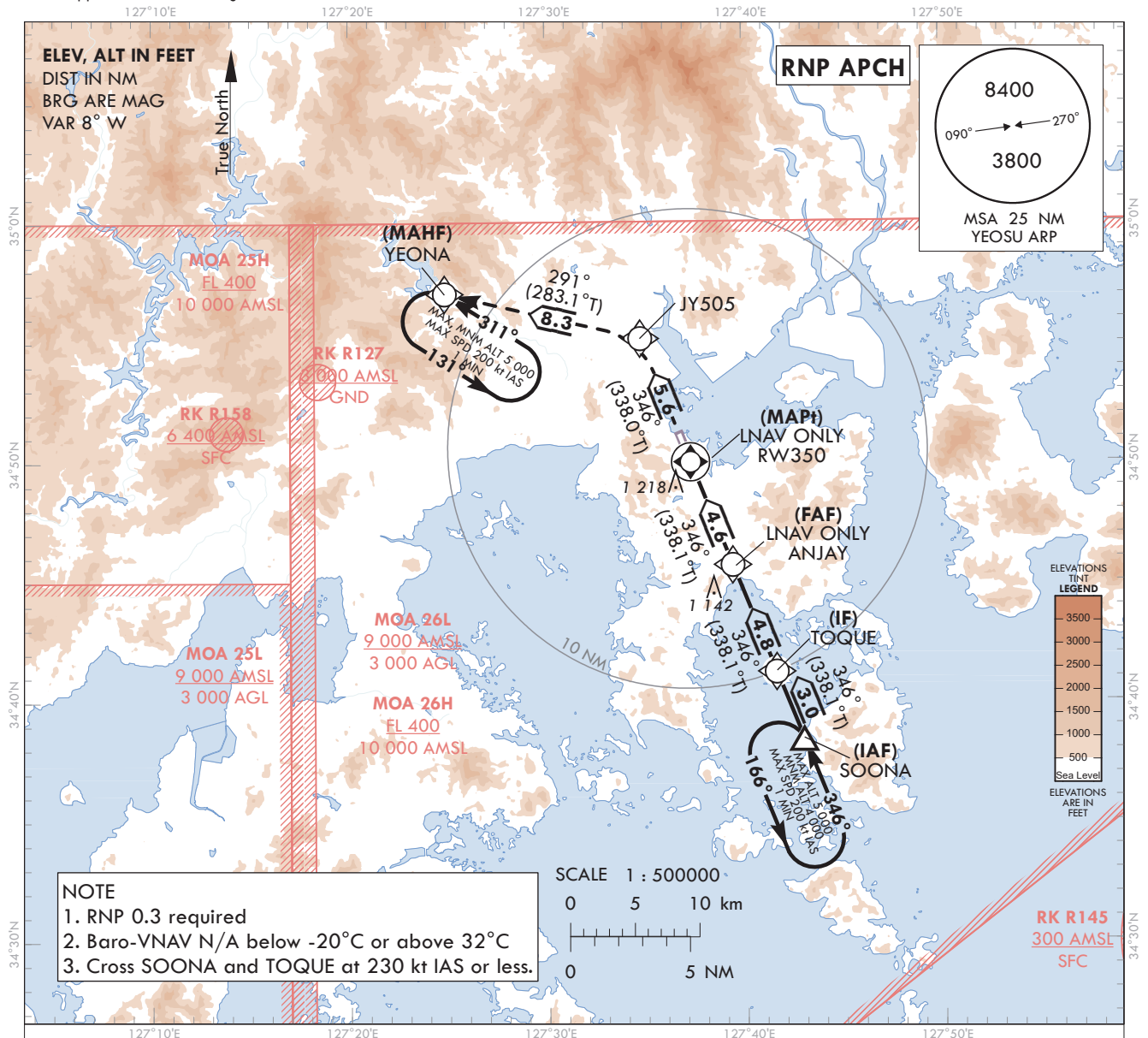
AERODROME ELEV 53 ft
HEIGHTS RELATED TO
THR RWY 35 - ELEV 31 ft

SACHEON	APP	135.4
YEOSU	TWR	122.5
		240.9

YEOSU/Yeosu (RKJY)

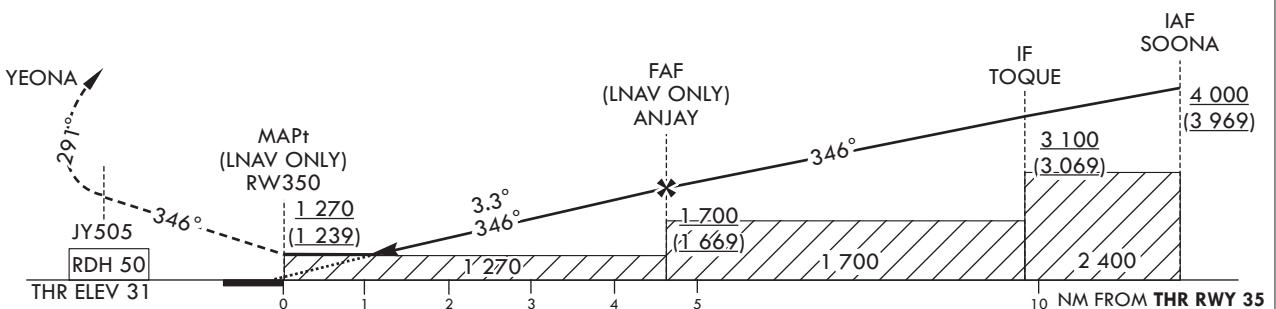
RNP RWY 35

Note : Approach under ICAO Flight Procedures.



MISSSED APPROACH

Climb to 5 000 ft on track of 346° to JY505, LEFT turn on track of 291° to YEONA.
Hold as published.



CATEGORY			MDA(H)/DA(H)	A	B	C	D		Knots	60	90	120	150	180					
STA	LNAV/VNAV	FULL	1 070	4 400 m			Rate of descent	V/V fpm	350	525	700	875	1 050						
		ALS INOP	(1 039)	4 900 m															
	LNAV	FULL	1 270	5 000 m										*Timing Not authorized for defining MAPt. *Circling Not authorized.					
		ALS INOP	(1 239)	5 000 m															

Chage : Improved clarity such as terrain.

AERONAUTICAL DATA TABULATION

Instrument Approach Procedure Coding Tables

RNP RWY 35

Serial Number	Path Descriptor	Waypoint Identifier	Fly-over	Course/Track °M(°T)	Distance (NM)	Turn direction	Altitude (ft)	Speed (kt)	Coordinates	VPA/ RDH	Navigation specification	Remarks
001	IF	SOONA	-	-	-	-	+4 000	-230	34°38'27.5"N 127°42'56.0"E	-	RNP APCH	IAF
002	TF	TOQUE	-	346(338.1)	3.0	-	+3 100	-230	34°41'14.7"N 127°41'34.5"E	-	RNP APCH	IF
003	TF	ANJAY	-	346(338.1)	4.8	-	+1 700	-	34°45'42.7"N 127°39'23.7"E	-	RNP APCH	FAF
004	TF	RW350	Y	346(338.1)	4.6	-	+1 270	-	34°50'00.53"N 127°37'17.70"E	-3.30/50	RNP APCH	MAPt
005	TF	JY505	-	346(338.0)	5.6	-	-	-	34°55'10.9"N 127°34'45.7"E	-	RNP APCH	-
006	TF	YEONA	Y	291(283.1)	8.3	-	-	-	34°57'03.8"N 127°24'52.1"E	-	RNP APCH	-
007	HM	YEONA	Y	311(302.6)	-	L	@5 000	-200	34°57'03.8"N 127°24'52.1"E	-	RNP APCH	1 MIN (Outbound timing)

HOLDING PROCEDURE

Holding Identification	Path Descriptor	Waypoint Identifier	Fly-over	Course/Track °M(°T)	Time (min)	Turn direction	Altitude (ft)	Speed (kt)	Coordinates	VPA/ RDH	Navigation specification	Remarks
RNP RWY 35	HM	SOONA	Y	346(338.5)	1	L	-5 000 +4 000	-200	34°38'27.5"N 127°42'56.0"E	-	RNAV 1	-

**INSTRUMENT
APPROACH
CHART - ICAO**

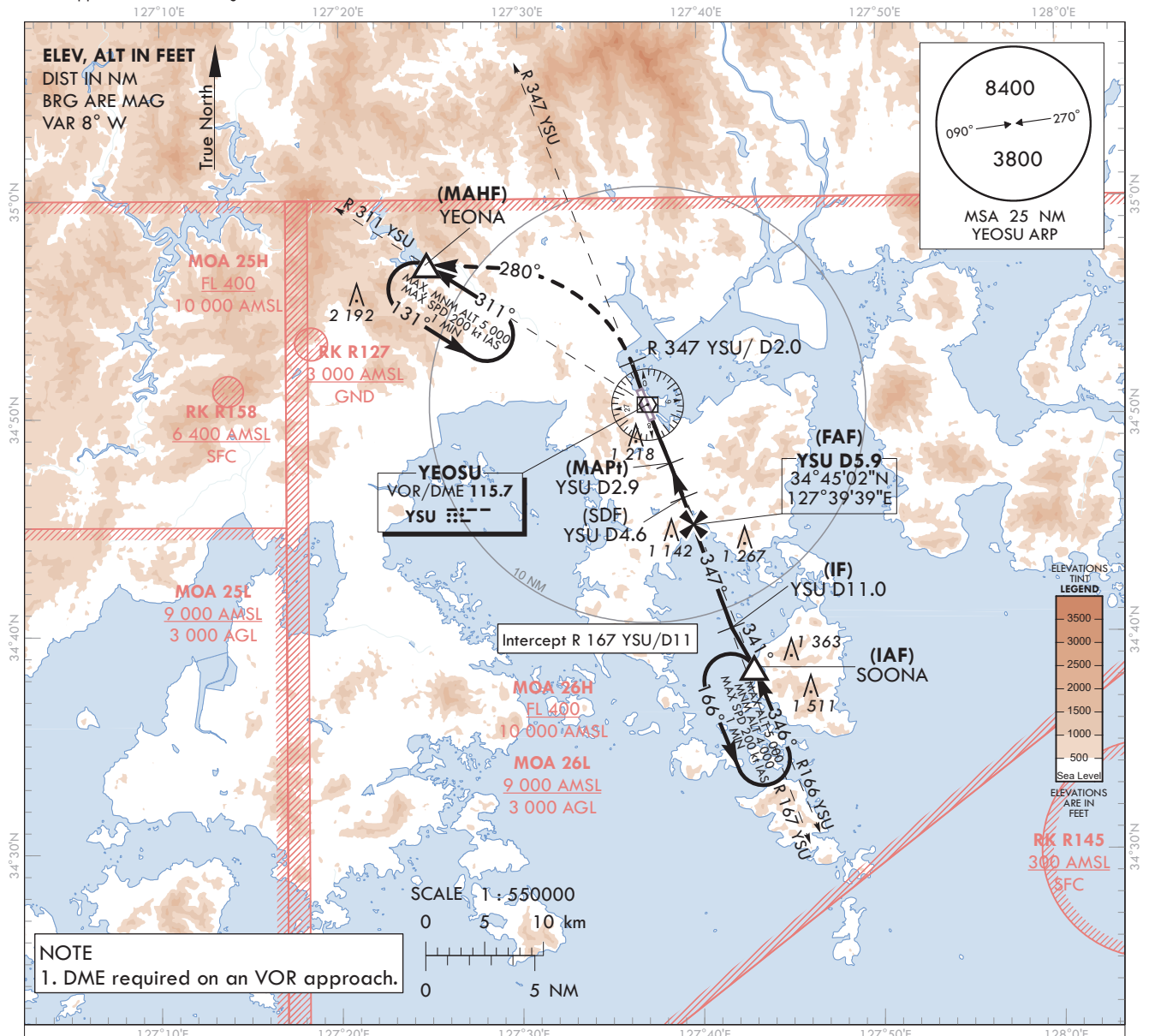
AERODROME ELEV 53 ft
HEIGHTS RELATED TO
THR RWY 35 - ELEV 31 ft

SACHEON	APP	135.4
YEOSU	TWR	122.5
		240.9

YEOSU/Yeosu (RKJY)

VOR RWY 35

Note : Approach under ICAO Flight Procedures.

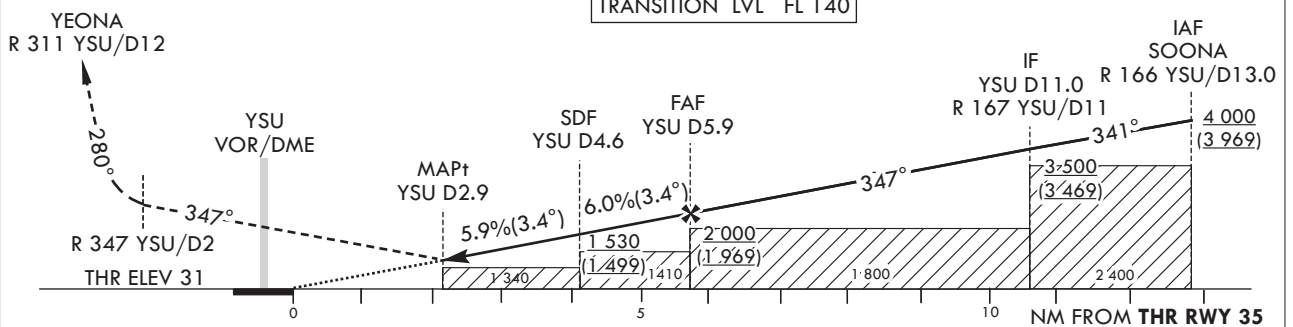


MISSED APPROACH

Climb straight ahead to R 347 YSU/D2.
Then turn LEFT HDG 280° to intercept and
Climb on R 311 YSU to YEONNA. Hold at 5 000 ft.

RECOMMENDED PROFILE(LOC ONLY)	DME IYSU	5	4.1
Final Approach Gradient 5.93%, 360 ft/NM	ALT(HGT)	1 676 (1 645)	1 340 (1 309)

TRANSITION ALT 14 000
TRANSITION LVL FL 140



CATEGORY		MDA(MDH)	A	B	C	D		Knots	60	90	120	150	180
STA	FULL	1 340 (1 309)	5 000 m				Rate of descent	V/V fpm	360	540	720	900	1 080
	ALS INOP		5 000 m				* Timing Not authorized for defining MAPt. * Circling Not authorized.						

Change : Improved clarity such as terrain.

YEosu/Yeosu(RKJY)
VOR RWY 35

AERONAUTICAL DATA TABULATION

VOR Approach to RWY 35 from SOONA			
Fix/point		Coordinates	
SOONA(IAF)	R 166 YSU /13.00 NM YSU	34°38'27.5"N	127°42'56.0"E
D11.0 YSU(IF)	BRG 347.41°/11.00 NM YSU	34°40'15.2"N	127°41'48.9"E
D5.9 YSU(FAF)	BRG 347.41°/5.90 NM YSU	34°45'02.3"N	127°39'38.9"E
D4.6 YSU(SDF)	BRG 347.41°/4.60 NM YSU	34°46'15.4"N	127°39'05.8"E
D2.9 YSU(MAPt)	BRG 347.41°/2.90 NM YSU	34°47'51.1"N	127°38'22.3"E
THR RWY 35	Final approach descent angle 3.41°(FAF-SDF) / 3.38°(SDF-THR)	34°50'00.53"N	127°37'17.70"E
YSU VOR/DME		34°50'34.3"N	127°37'08.7"E
D2.0 YSU	BRG 347.15°/2.00 NM YSU	34°52'26.9"N	127°36'17.0"E
YEONA	BRG 310.64°/12.00 NM YSU	34°57'03.8"N	127°24'52.1"E